



Cute but
Fierce

Mignon mais redoutable

MONIKA
NOWAK



KINTSUGI GOLD + KAWAII SUGAR RUSH :

SCARS DON'T WHISPER, THEY SPARKLE AND ROAR!

Kintsugi doré + kawaii sucré : les cicatrices ne murmurent pas, elles scintillent et rugissent!

*Kintsugi
kawaii*

Dans sa collection Urban Geisha, Monika Nowak s'inspire des figures emblématiques de la culture japonaise pour les réinterpréter dans un cadre contemporain. Les Geishas qu'elle dépeint ne sont plus les gardiennes de traditions ancestrales, mais des femmes modernes, évoluant dans un environnement urbain et saturé de symboles pop. L'artiste fusionne l'élégance des traditions avec l'énergie effervescente de la culture urbaine actuelle.

Ces Urban Geishas réinventent leur rôle, brisant les stéréotypes tout en revendiquant une identité affirmée, témoignant de la capacité à se réinventer dans un monde en perpétuelle évolution.

Cette collection illustre parfaitement l'esprit de l'œuvre de Monika Nowak : un dialogue permanent entre le passé et le présent, entre la provocation et la poésie, où la femme s'impose comme l'héroïne incontestée de son propre destin.

In her Urban Geisha collection, Monika Nowak draws inspiration from iconic figures of Japanese culture, reinterpreting them in a contemporary setting. The geishas she depicts are no longer guardians of ancestral traditions, but modern women living in an urban environment saturated with pop symbols. The artist blends the elegance of tradition with the effervescent energy of today's urban culture.

These Urban Geishas reinvent their role, breaking stereotypes while asserting a strong and confident identity, demonstrating the ability of femininity to reinvent itself in a constantly changing world.

This collection perfectly illustrates the spirit of Monika Nowak's work: a constant dialogue between the past and the present, between provocation and poetry, where women assert themselves as the undisputed heroines of their own destiny.

INSTAGRAM & FACEBOOK : MONIKA NOWAK ART

WEBSITE : MONIKA-NOWAK-ART.COM

MAIL : MONIKANOWAKART@GMAIL.COM

PHONE : +33(0)6 03 57 37 27

MONIKA NOWAK PORTFOLIO

2026 Monika Nowak , all rights reserved.

No part of this catalogue may be reproduced, stored in a retrieval system or transmitted in any form, or by no means, electronic, mechanical, photocopying, recording or otherwise, without prior permission of the publisher.



Kin-Kawaii 58

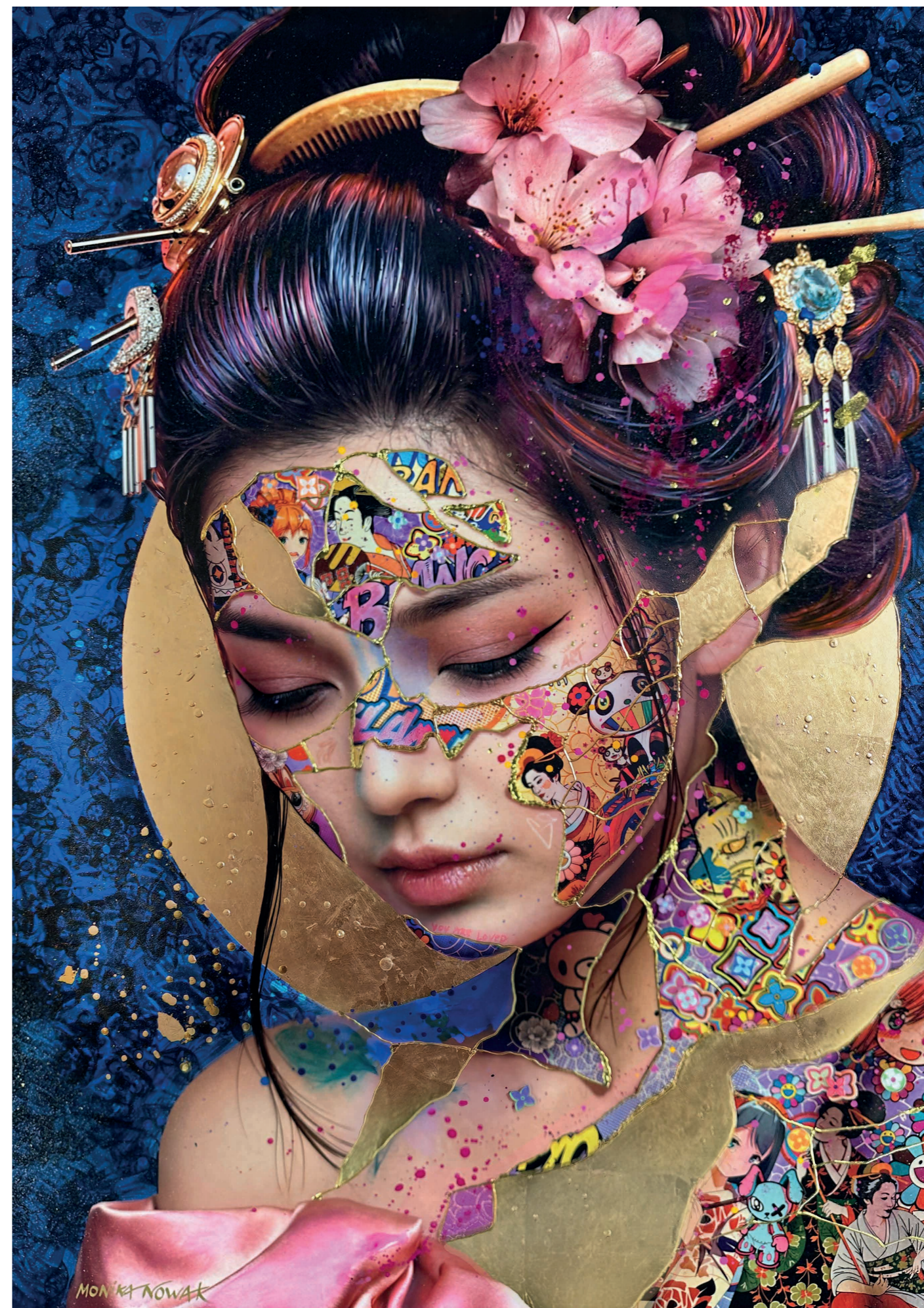
**Techniques mixtes sur métal, acrylique,
feuille d'or en relief.**

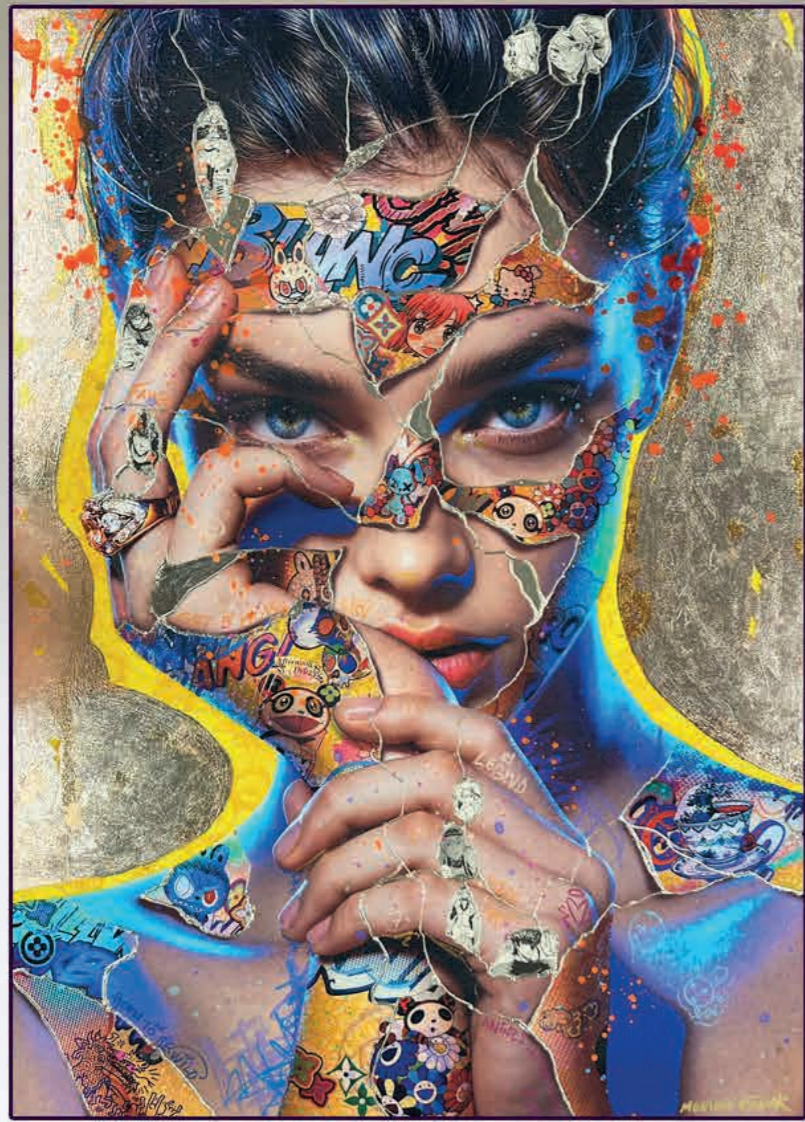
Mixed media, acrylic, embossed gold leaves

Oeuvre unique et originale

unique and original work

140 x 100 cm





Kin-Kawaii 60

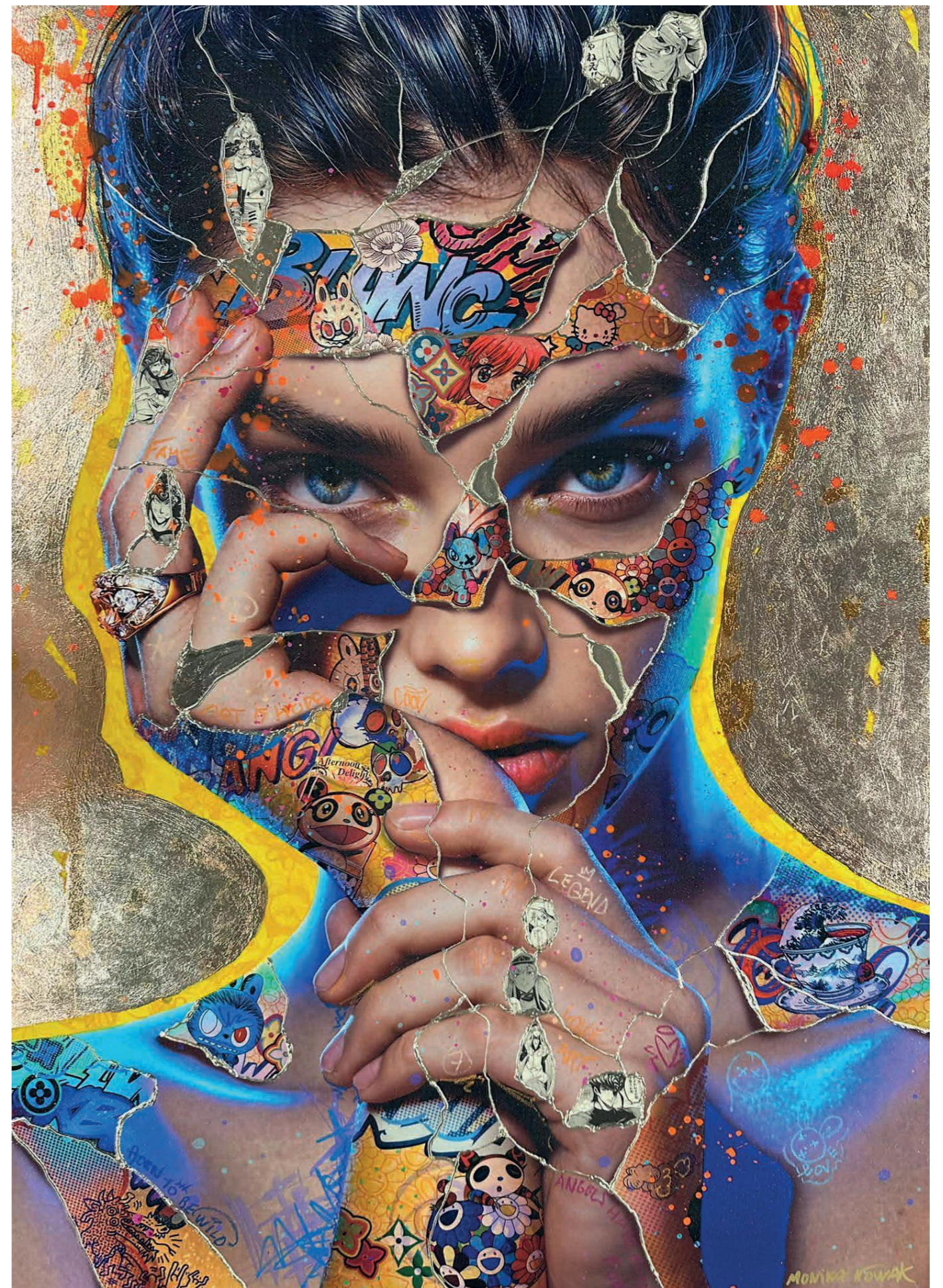
**Techniques mixtes sur métal, acrylique,
feuille d'or en relief.**

Mixed media, acrylic, embossed gold leaves

Oeuvre unique et originale

unique and original work

140 x 100 cm





Kin-Kawaii 65

**Techniques mixtes sur métal, acrylique,
feuille d'or en relief.**

Mixed media, acrylic, embossed gold leaves

Oeuvre unique et originale
unique and original work

140 x 100 cm





Kin-Kawaii 61

**Techniques mixtes sur métal, acrylique,
feuille de cuivre d'or en relief.**

Mixed media, acrylic, embossed gold leaves

Oeuvre unique et originale
unique and original work

150 x 100 cm



Kin-Kawaii 62

**Techniques mixtes sur métal, acrylique,
feuille de cuivre d'or en relief.**

Mixed media, acrylic, embossed gold leaves

Oeuvre unique et originale
unique and original work

150 x 100 cm



Kin-Kawaii56

**Techniques mixtes sur métal, acrylique,
feuille d'or en relief.**
Mixed media, acrylic, embossed gold leaves
Oeuvre unique et originale
unique and original work
140 x 100 cm





Kin-Kawaii59

**Techniques mixtes sur métal, acrylique,
feuille d'or en relief.**

Mixed media, acrylic, embossed gold leaves

Oeuvre unique et originale

unique and original work

140 x 105 cm





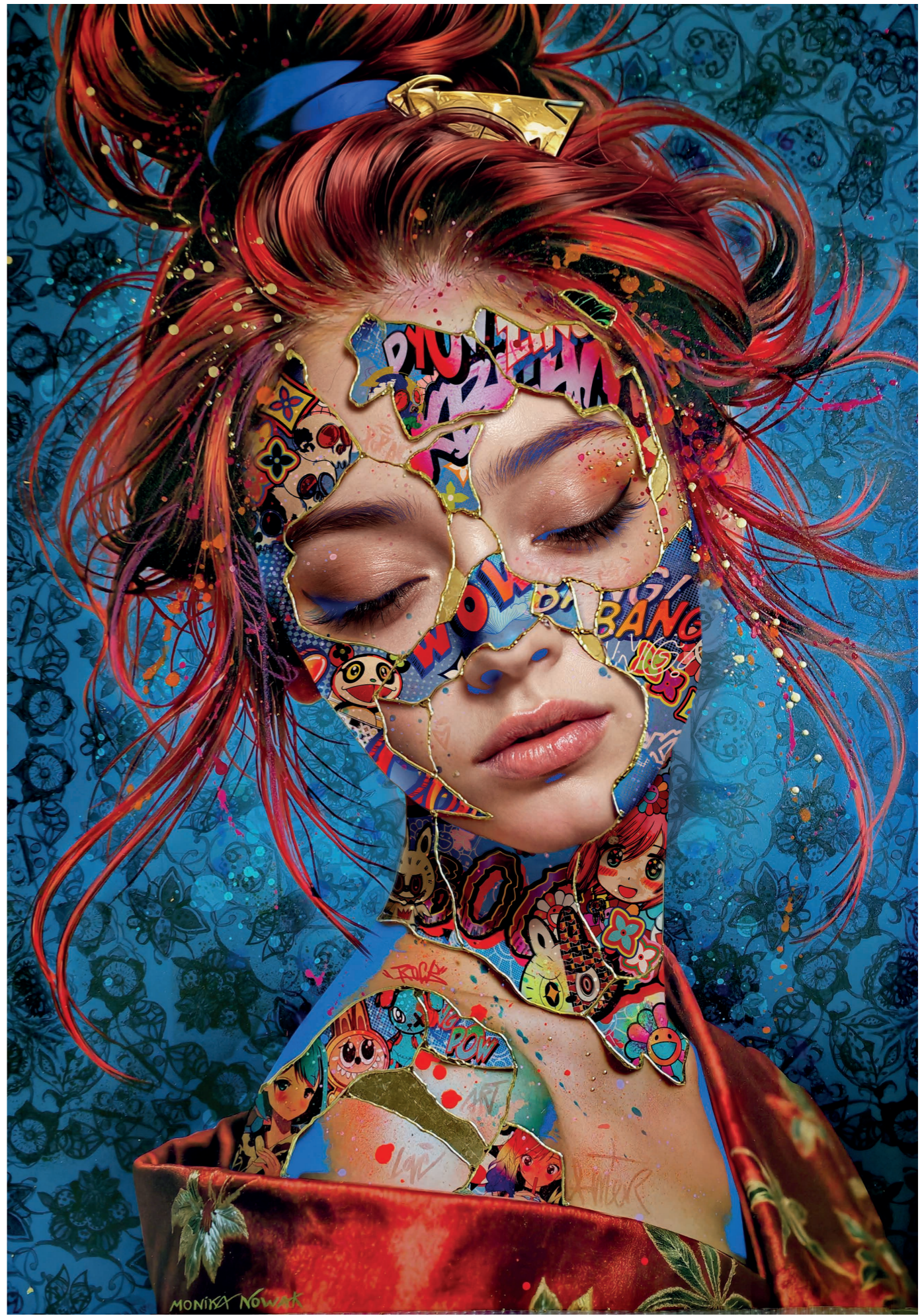
Kin-Kawaii 57

Techniques mixtes sur métal, acrylique, feuille d'or en relief.

Mixed media, acrylic, embossed gold leaves

Oeuvre unique et originale
unique and original work

140 x 100 cm



MONIKA Nowak



Kin-Kawaii 54

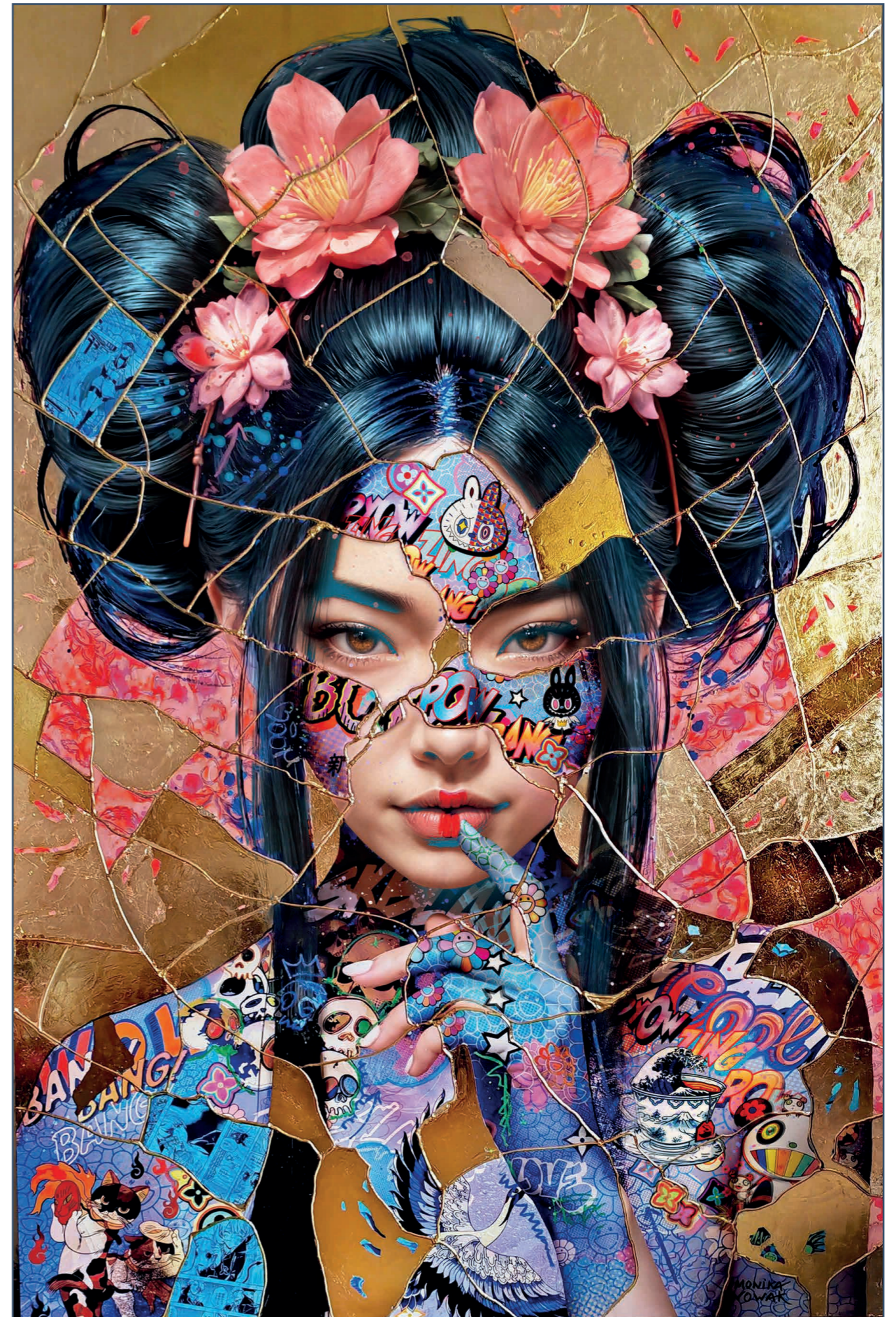
**Techniques mixtes sur métal, acrylique,
feuille d'or en relief.**

Mixed media, acrylic, embossed gold leaves

Oeuvre unique et originale

unique and original work

140 x 95 cm





Kin-Kawaii 6.3

**Techniques mixtes sur métal, acrylique,
feuille d'or en relief.**

Mixed media, acrylic, embossed gold leaves

Oeuvre unique et originale

unique and original work

100 x 80 cm





Kin-Kawaii64

**Techniques mixtes sur métal, acrylique,
feuille d'or en relief.**

Mixed media, acrylic, embossed gold leaves

Oeuvre unique et originale

unique and original work

100 x 80 cm





INSPIRATION :

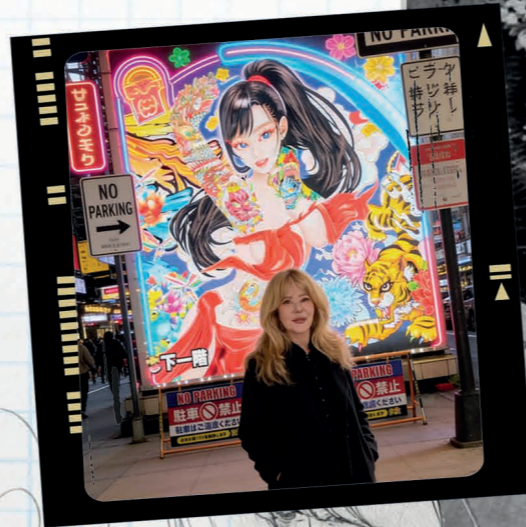
FROM MANGAS TO URBAN GEISHAS

*In the 1980s, Japanese cartoons arrived on French television. It was a shock!
I drew my favourite heroes in front of the small screen,
fascinated by their epic battles.*

*I always drew, and I was convinced that I would spend my
life doing so. In any case, I had no other desires.
So I invented my own world.*

*I created a universe in which I could escape from everyday
life.*

*I told myself that the best way to spark joy in others was to
first bring joy to myself, to be happy without
pretence.*



MONIKA NOWAK was born in central France into a family of Polish artists. Passionate about Japanese manga and Western pop culture, she has managed to fuse the two styles into a very personal style. Inspired by the kintsugi technique, which celebrates the aesthetic and spiritual value of imperfection and the process of repair, MONIKA NOWAK explores this philosophy that values the beauty of impermanence and incompleteness.

Embossed gold is omnipresent in her paintings and has become her signature. Monika Nowak's works reveal the expressive faces of mischievous, dreamy, intense, provocative women, hinting at a gentle poetry enhanced by gold leaf. In her paintings, the cracks, imperfections and scars that life leaves on each of us are celebrated as part of our history and as a source of strength and beauty.

The image is a complex, multi-layered collage. At the top, a woman's face is depicted with large, expressive eyes, long dark eyelashes, and a small blue flower-shaped earring. The background behind her is a mix of brown, purple, and blue tones with scattered pink and blue speckles. Below the face, the artwork transitions into a dense field of colorful, stylized floral and geometric patterns. These include large pink and blue flowers, smaller blue and pink blossoms, and various shapes like circles and squares, all outlined in black and filled with bright colors. The entire composition is framed and accented with irregular, organic shapes of gold leaf, which has a shimmering, metallic texture. The overall aesthetic is reminiscent of mid-century modern pop art or bohemian folk art.

**"WHY BE BROKEN
WHEN YOU CAN BE
GOLD?"**